

## Neo Modern

Wall Hung Lav  
TF-0953



### FEATURES

- Easy to clean
- Overflow hole on back position

### SPECIFICATIONS

- Faucet Drillings: Single / T4" / T8"
- Basin Dimensions: W450\*L553\*H200 mm.
- Material: Vitreous China

### COLOR AVAILABILITY

- White (WT)

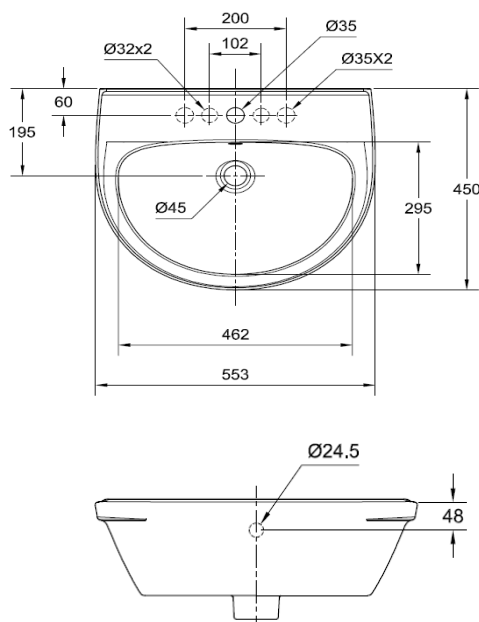
### INCLUDED COMPONENTS

- Overflow ring
- Wall fixing set for Lavatory
- Installation manual

### SHIPPING WEIGHT

- Net Weight: 16 KGs.
- Gross Weight:

### DIMENSIONAL DRAWING



### STANDARDS CRITERIA

- TIS Standard
- EN Standard
- ASME Standard

