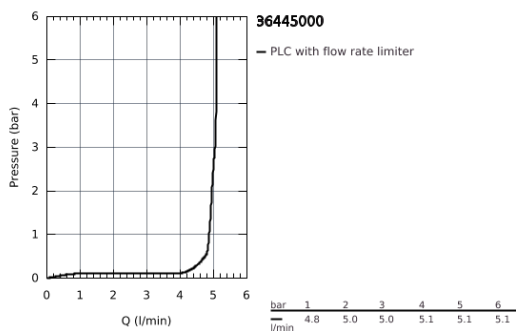
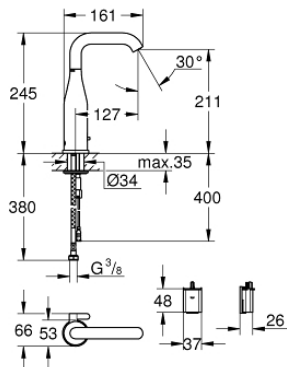


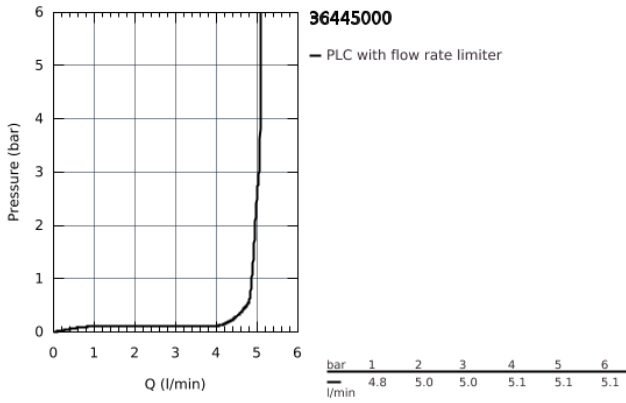
36 445 000 INFRA-RED ELECTRONIC BASIN MIXER 1/2" WITH MIXING DEVICE AND ADJUSTABLE TEMPERATURE LIMITER



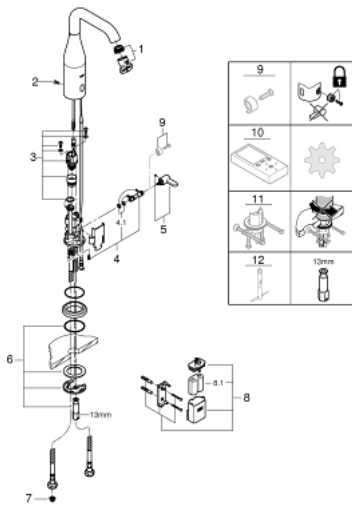
PRODUCT DESCRIPTION

- with infrared sensor for bi-directional communication for monitoring, configuration and servicing
- 6V lithium battery, type CR-P2
- battery lifetime approx. 7 years (150 actuations a day)
- **GROHE StarLight** chrome finish
- adjustable swivel area 0° / 150° / 360°
- laminar spray regulator 5.0 l/min
- flexible connection hoses
- non-return valve
- dirt strainers
- with integrated solenoid valve
- external battery
- rapid installation system
- multistage battery status display
- 7 pre-set programs
- auto flush
- thermal disinfection
- cleaning mode
- additional functions and precise settings by remote control 36 407
- CE approved
- noise classification 1 in accordance with DIN4109
- type of protection faucet IP 59K

36 445 000 **INFRA-RED ELECTRONIC BASIN MIXER 1/2" WITH MIXING
DEVICE AND ADJUSTABLE TEMPERATURE LIMITER**



36 445 000 INFRA-RED ELECTRONIC BASIN MIXER 1/2" WITH MIXING DEVICE AND ADJUSTABLE TEMPERATURE LIMITER



SPARE PARTS

- 1: Flow straightener (Order-nr. 48376000)
 - 2: Screw (Order-nr. 4283100M)
 - 3: Solenoid valve (Order-nr. 42479000)
 - 4: Mixer spindle (Order-nr. 42402000)
 - 5: Mixing lever (Order-nr. 42401000)
 - 5.1: O-Ring (Order-nr. 4284000M)
 - 6: Mounting set (Order-nr. 42400000)
 - 7: Filter (Order-nr. 4241300M)
 - 8: Battery Housing (Order-nr. 42393000)
 - 8.1: Battery (Order-nr. 42886000)
 - 9: Security cover cap (Order-nr. 42408000)*
 - 10: Remote control (Order-nr. 36407001)*
 - 11: Rotation lock (Order-nr. 36276000)*
 - 12: Mounting wrench (Order-nr. 19017000)*
- * Optional accessories