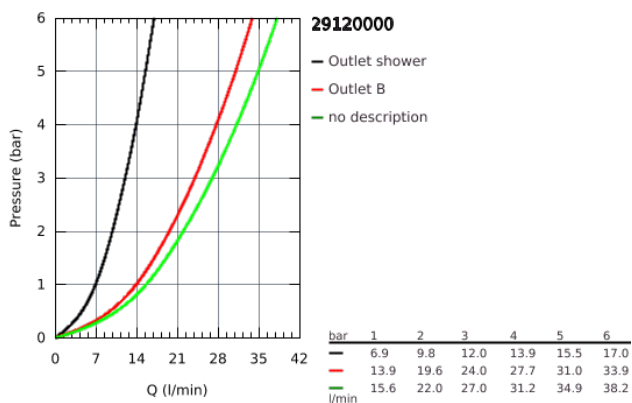
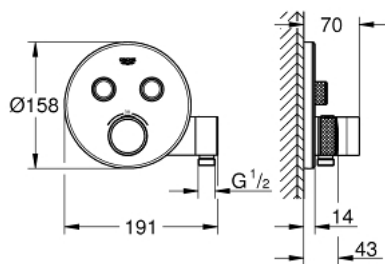


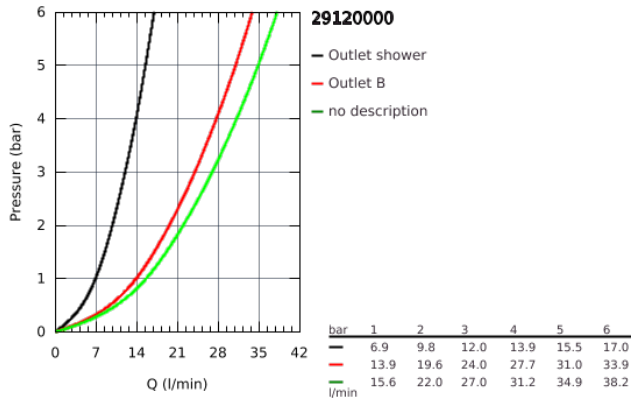
29 120 000 THERMOSTAT FOR CONCEALED INSTALLATION WITH 2 VALVES AND INTEGRATED SHOWER HOLDER



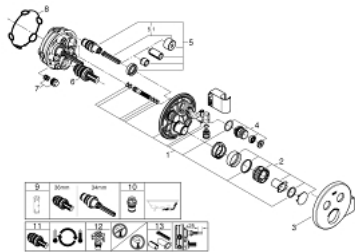
PRODUCT DESCRIPTION

- set for final installation for
- GROHE Rapido SmartBox 35 600/35 604
- metal wall escutcheon with **GROHE FastFixation** (covered escutcheon and shaft sealing, covered fixing), retroactively 6° adjustable
- **GROHE StarLight** chrome finish
-
- **GROHE SmartControl** push for ON-OFF, turn for volume adjustment from EcoJoy to full flow
- exchangeable symbols
- **GROHE TurboStat** compact cartridge with wax thermoelement
- GROHE ProGrip with knurl structure
- **GROHE SafeStop** safety button at 38°C
(calibration required)
- **GROHE SafeStop Plus** optional temperature limiter at 43°C or 46°C included
- built-in non return valve and dirt strainers
- multiple outlets can be run simultaneously
- integrated shower union with shower outlet ½"
- **without roughing-in-set**
- flow performance:
outlet B = 24 l/min
hand shower = 12 l/min
outlet B + hand shower = 27 l/min

29 120 000 THERMOSTAT FOR CONCEALED INSTALLATION WITH 2 VALVES AND INTEGRATED SHOWER HOLDER



29 120 000 THERMOSTAT FOR CONCEALED INSTALLATION WITH 2 VALVES AND INTEGRATED SHOWER HOLDER



SPARE PARTS

- 1: Mounting Template (Order-nr. 48364000)
 - 2: Temperature control handle (Order-nr. 49029000)
 - 3: Escutcheon (Order-nr. 49034000)
 - 4: WC push button (Order-nr. 48361000)
 - 5: Cartridge (Order-nr. 48359000)
 - 5.1: Spindle (Order-nr. 49088000)
 - 6: Thermostatic compact cartridge 3/4" (Order-nr. 49028000)
 - 7: Non-return valves (Order-nr. 47979000)
 - 8: Sealing washer (Order-nr. 48360000)
 - 9: Socket Spanner (Order-nr. 49059000)*
 - 10: Backflow protection combination (DIN-EN1717) (Order-nr. 14055000)*
 - 11: GROHE TurboStat cartridge 3/4" (Order-nr. 49003000)*
 - 12: Service stops (Order-nr. 1405300M)*
 - 13: Universal extension set single-lever mixers, 25 mm (Order-nr. 14048000)*
- * Optional accessories