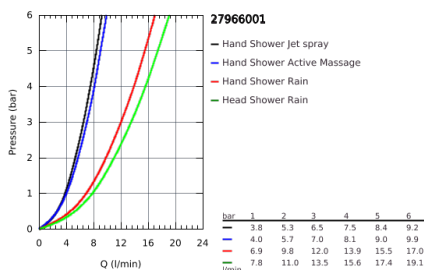
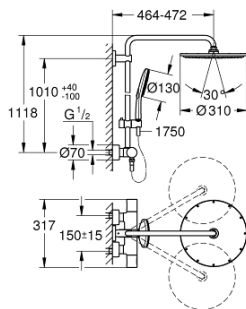


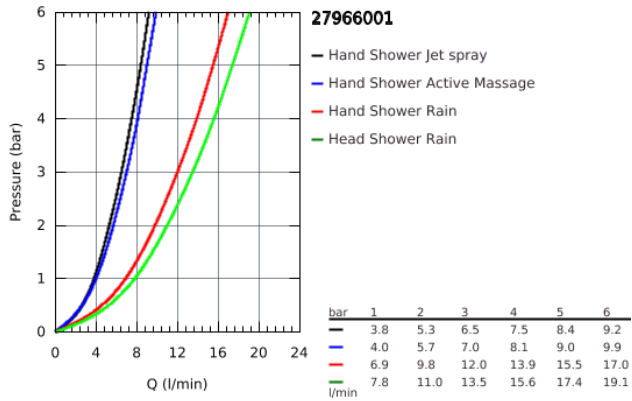
27 966 001 RAINSHOWER SYSTEM SHOWER SYSTEM WITH THERMOSTAT FOR WALL MOUNTING



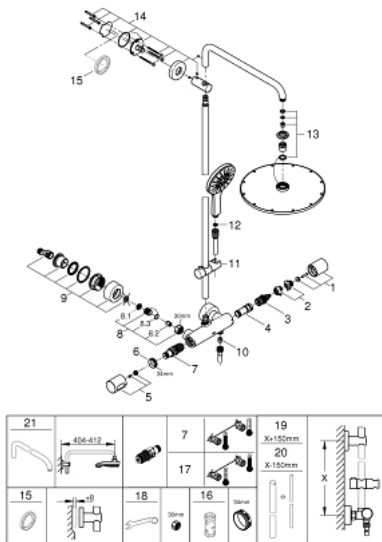
PRODUCT DESCRIPTION

- Consisting of:
 - horizontal swivable 450 mm projection shower arm
- **exposed thermostatic shower**
 - with Aquadimmer function
- allows change between:
 - Rainshower Cosmopolitan 310 head shower (27 477 000)
 - material: metal
 - with ball joint
 - rotation angle $\pm 15^\circ$
 - hand shower Rainshower SmartActive 130 (26 544)
 - adjustable height via gliding element
 - Silverflex shower hose 1750 mm (28 388 000)
- **GROHE TurboStat** compact cartridge
 - with wax thermoelement
- **GROHE SafeStop** safety button at 38°C
 - (calibration required)
- **GROHE SafeStop Plus** optional temperature limiter at 43°C included
- **GROHE CoolTouch** prevents scalding on hot surfaces
- **GROHE DreamSpray** perfect spray pattern
- **GROHE One-Click Showering** spray selection
 - with one click
- **GROHE StarLight** chrome finish
- **GROHE FastFixation** (upper bracket adjustable)
- **SpeedClean** anti-limescale system
- suitable for instantaneous heaters from 18 kW/h
- minimum flow rate 7 l/min.

27 966 001 RAINSHOWER SYSTEM SHOWER SYSTEM WITH THERMOSTAT FOR WALL MOUNTING



27 966 001 RAINSHOWER SYSTEM SHOWER SYSTEM WITH THERMOSTAT FOR WALL MOUNTING



SPARE PARTS, August 2018 – now

- 1: Aquadimmer handle (Order-nr. 47804000)
 - 2: Temperature limiter (Order-nr. 47723000)
 - 3: Aquadimmer (Order-nr. 47364000)
 - 4: Water flow (Order-nr. 47887000)
 - 5: Temperature scale handle (Order-nr. 47811000)
 - 6: retaining ring (Order-nr. 47743000)
 - 7: Thermostatic compact cartridge 1/2" (Order-nr. 47439000)
 - 8: Non-return valve (Order-nr. 47189000)
 - 8.1: Filter (Order-nr. 0726400M)
 - 8.2: Non-return valve (Order-nr. 08565000)
 - 8.3: O-Ring Ø17 x Ø2 (Order-nr. 0305500M)
 - 9: S-union (Order-nr. 12693000)
 - 10: Non-return valve (Order-nr. 08565000)
 - 11: Sliding piece (Order-nr. 12140000)
 - 12: Strainer (Order-nr. 0700200M)
 - 13: Inlet valve assembly (Order-nr. 45933000)
 - 14: Outlet shower holder (Order-nr. 48279000)
 - 15: Spacer (Order-nr. 27180000)*
 - 16: Socket Spanner (Order-nr. 19332000)*
 - 17: GROHE TurboStat cartridge 1/2" (Order-nr. 47175000)*
 - 18: Special Spanner (Order-nr. 19377000)*
 - 19: Shower system pipe for retrofitting (Order-nr. 48053000)*
 - 20: Shower system pipe for retrofitting (Order-nr. 48054000)*
 - 21: Shower arm for shower systems (Order-nr. 14047000)*
- * Optional accessories