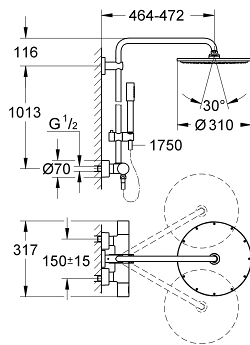
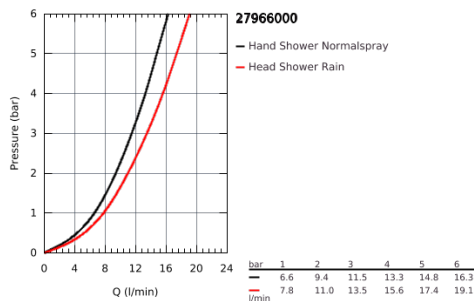


## 27 966 000 RAINSHOWER SYSTEM SHOWER SYSTEM WITH THERMOSTAT FOR WALL MOUNTING

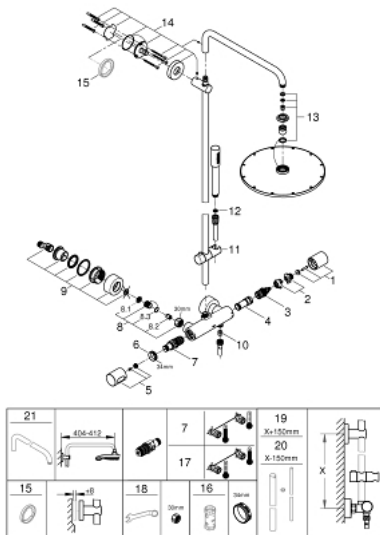


### PRODUCT DESCRIPTION

- horizontal swivable 450 mm projection shower arm
- **exposed thermostatic shower** with Aquadimmer function
- allows change between:
  - Rainshower Cosmopolitan 310 head shower (27 477 000)
  - material: metal
  - with ball joint
  - rotation angle  $\pm 15^\circ$
  - hand shower Sena Stick (28 034 000)
  - adjustable height via gliding element (12 140 000)
  - Silverflex shower hose 1750 mm (28 388 000)
- **GROHE TurboStat** compact cartridge with wax thermoelement
- **GROHE SafeStop** safety button at 38°C ( calibration required )
- **GROHE SafeStop Plus** optional temperature limiter at 43°C included
- **GROHE CoolTouch** prevents scalding on hot surfaces
- **GROHE DreamSpray** perfect spray pattern
- **GROHE StarLight** chrome finish
- **SpeedClean** anti-limescale system
- minimum flow rate 7 l/min.



## 27 966 000 RAINSHOWER SYSTEM SHOWER SYSTEM WITH THERMOSTAT FOR WALL MOUNTING



### SPARE PARTS, April 2017 – now

- 1: Aquadimmer handle (Order-nr. 47804000)
  - 2: Temperature limiter (Order-nr. 47723000)
  - 3: Aquadimmer (Order-nr. 47364000)
  - 4: Water flow (Order-nr. 47887000)
  - 5: Temperature scale handle (Order-nr. 47811000)
  - 6: retaining ring (Order-nr. 47743000)
  - 7: Thermostatic compact cartridge 1/2" (Order-nr. 47439000)
  - 8: Non-return valve (Order-nr. 47189000)
  - 8.1: Filter (Order-nr. 0726400M)
  - 8.2: Non-return valve (Order-nr. 08565000)
  - 8.3: O-Ring  $\varnothing 17 \times \varnothing 2$  (Order-nr. 0305500M)
  - 9: S-union (Order-nr. 12693000)
  - 10: Non-return valve (Order-nr. 08565000)
  - 11: Sliding piece (Order-nr. 12140000)
  - 12: Strainer (Order-nr. 0700200M)
  - 13: Inlet valve assembly (Order-nr. 45933000)
  - 14: Outlet shower holder (Order-nr. 48279000)
  - 15: Spacer (Order-nr. 27180000)\*
  - 16: Socket Spanner (Order-nr. 19332000)\*
  - 17: GROHE TurboStat cartridge 1/2" (Order-nr. 47175000)\*
  - 18: Special Spanner (Order-nr. 19377000)\*
  - 19: Shower system pipe for retrofitting (Order-nr. 48053000)\*
  - 20: Shower system pipe for retrofitting (Order-nr. 48054000)\*
  - 21: Shower arm for shower systems (Order-nr. 14047000)\*
- \* Optional accessories