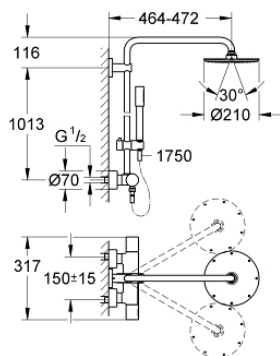


27 032 001 RAINSHOWER SYSTEM SHOWER SYSTEM WITH THERMOSTAT FOR WALL MOUNTING

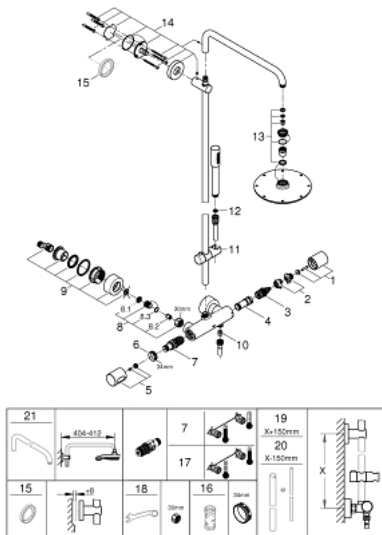


PRODUCT DESCRIPTION

- consists of:
- Horizontal swivable 450 mm shower arm
- exposed thermostat with Aquadimmer function
- allows change between:
- Rainshower Cosmopolitan 210 metal head shower (28 368 000)
- with ball joint
- angle of rotation $\pm 15^\circ$
- hand shower Sena 28 034 000
- adjustable in height with gliding element (12 140 000)
- metal shower hose 1750 mm (27 178)
- **GROHE TurboStat** compact cartridge with wax thermoelement
- GROHE SafeStop at 38°C
- **GROHE SafeStop Plus** optional temperature limiter at 43°C included
- **GROHE CoolTouch** no risk of scalding
- **GROHE DreamSpray** perfect spray pattern
- **GROHE StarLight** chrome finish
- **SpeedClean** anti-lime system
- **Inner WaterGuide** for a longer life
- suitable for instantaneous heaters (min. 19 kW/h)
- minimum flow rate 7 l/min.
- minimum pressure 1,0 bar



27 032 001 RAINSHOWER SYSTEM SHOWER SYSTEM WITH THERMOSTAT FOR WALL MOUNTING



UNITS PER PACKAGE

- 1: Aquadimmer handle (Order-nr. 47804000)
 - 2: Temperature limiter (Order-nr. 47723000)
 - 3: Aquadimmer (Order-nr. 47364000)
 - 4: Water flow (Order-nr. 47887000)
 - 5: Scale handle (Order-nr. 47811000)
 - 6: Fitting ring (Order-nr. 47743000)
 - 7: Thermostatic compact cartridge 1/2" (Order-nr. 47439000)
 - 8: Non-return valve (Order-nr. 47189000)
 - 8.1: Dirt Strainer (Order-nr. 0726400M)
 - 8.2: Non-return valve (Order-nr. 08565000)
 - 8.3: O-ring $\varnothing 17 \times \varnothing 2$ (Order-nr. 0305500M)
 - 9: S-union (Order-nr. 12693000)
 - 10: Non-return valve (Order-nr. 08565000)
 - 11: Sliding piece (Order-nr. 12140000)
 - 12: Dirt strainer (Order-nr. 0700200M)
 - 13: Inlet valve assembly (Order-nr. 45933000)
 - 14: Outlet shower holder (Order-nr. 48279000)
 - 15: Compensation disc (Order-nr. 27180000)*
 - 16: Socket spanner (Order-nr. 19332000)*
 - 17: GROHE TurboStat cartridge 1/2" (Order-nr. 47175000)*
 - 18: Special spanner (Order-nr. 19377000)*
 - 19: Shower system pipe for retrofitting (Order-nr. 48053000)*
 - 20: Shower system pipe for retrofitting (Order-nr. 48054000)*
 - 21: Shower arm for shower systems (Order-nr. 14047000)*
- * Optional accessories