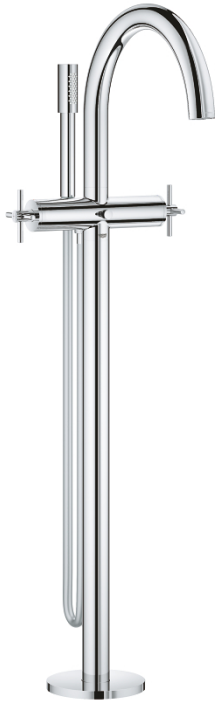
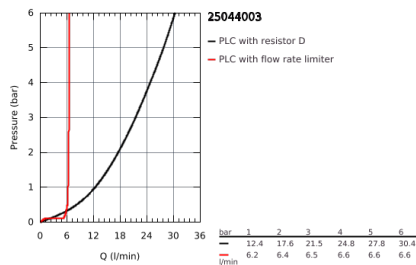
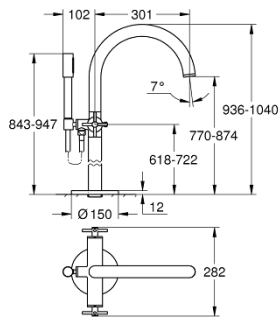


25 044 003 GROHE ATRIO BATH / SHOWER MIXER 1/2"

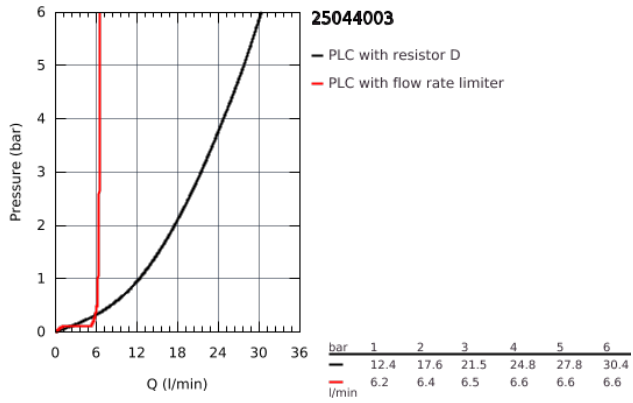


PRODUCT DESCRIPTION

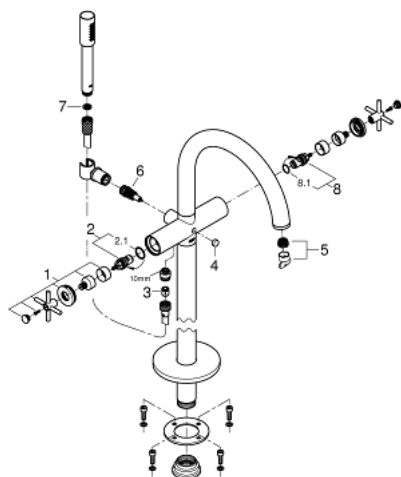
- floor-mounted installation with high pillar unions (765 mm)
- set for final installation for 45 984 001
- ceramic headparts 1/2", 90°
- **GROHE StarLight** chrome finish
- automatic diverter: bath/shower
- swivel tubular spout with mousseur and stop limiter
- projection 301 mm
- integrated non-return valve in the shower outlet 1/2"
- hand shower Sena Stick (26 465)
- with shower holder
- Silverflex shower hose 1250 mm (28 362)
- protected against backflow
- with cross handles
- Two different sets of caps included. One set with "H" and "C" marking, one set without marking.



25 044 003 **GROHE ATRIO BATH / SHOWER MIXER 1/2"**



25 044 003 **GROHE ATRIO BATH / SHOWER MIXER 1/2"**



SPARE PARTS

- 1: Pair of handles (Order-nr. 48406000)
- 2: Ceramic headpart, 1/2" (Order-nr. 45883000)
- 2.1: O-Ring Ø18,2 x Ø1,7 (Order-nr. 0392400M)
- 3: Non-return valve (Order-nr. 08565000)
- 4: Diverter knob (Order-nr. 64989000)
- 5: Flow restrictor (Order-nr. 13926000)
- 6: Diverter (Order-nr. 48407000)
- 7: Strainer (Order-nr. 0700200M)
- 8: Ceramic headpart, 1/2" (Order-nr. 45882000)
- 8.1: O-Ring Ø18,2 x Ø1,7 (Order-nr. 0392400M)