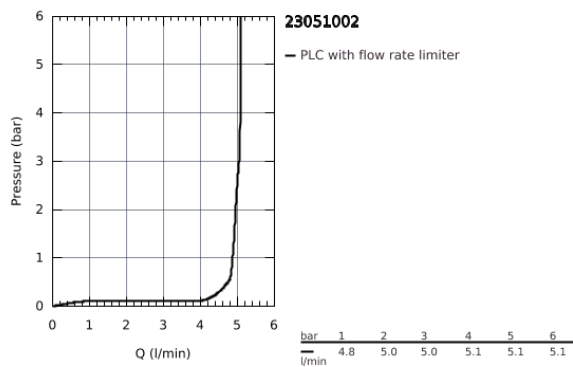
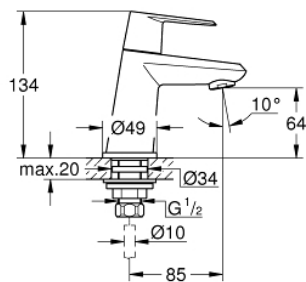


## 23 051 002 EURODISC COSMOPOLITAN PILLAR TAP XS-SIZE

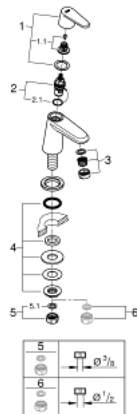


### PRODUCT DESCRIPTION

- monobloc installation
- metal lever
- ceramic headpart
- **GROHE StarLight** chrome finish
- **GROHE EcoJoy** SpeedClean mousseur 5.7 l/min
- union nut 1/2" x 10.5 mm



## 23 051 002 EURODISC COSMOPOLITAN PILLAR TAP XS-SIZE



### SPARE PARTS

- 1: Handle (Order-nr. 48060000)
- 1.1: Replacement handle connection kit (Order-nr. 45186000)
- 2: Ceramic headpart, 1/2" (Order-nr. 45882000)
- 2.1: O-Ring  $\varnothing 18,2 \times \varnothing 1,7$  (Order-nr. 0392400M)
- 3: Flow restrictor (Order-nr. 48159000)
- 4: Shank fastening assembly (Order-nr. 45000000)
- 5: Coupling nut 1/2" x 10.5 mm (Order-nr. 1290100M)
- 5.1: Fibre seal dia.  $\varnothing 18,5 \times \varnothing 12 \times 2$  (Order-nr. 0138900M)
- 6: Coupling nut 1/2" x 14.5 mm (Order-nr. 1290200M)\*

\* Optional accessories