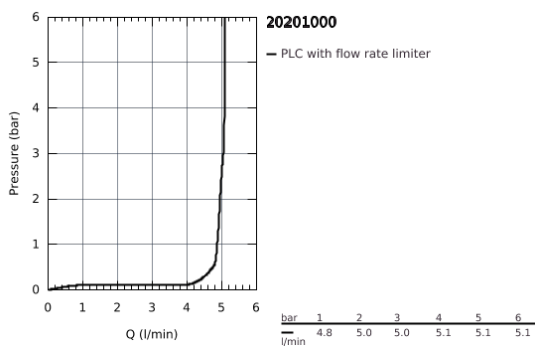
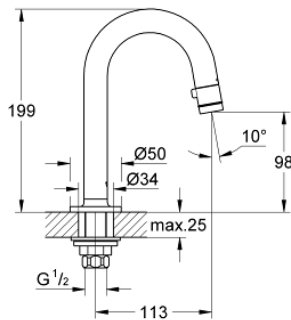


20 201 000 **UNIVERSAL UNIVERSAL PILLAR TAP 1/2"**

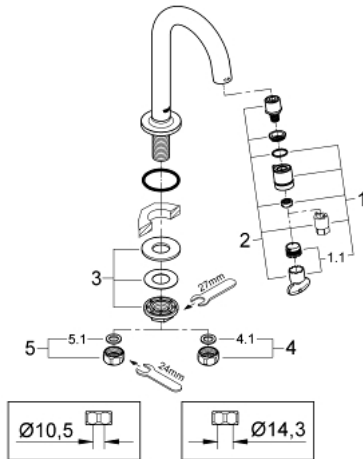


**PRODUCT DESCRIPTION**

- C-spout
- flow rate: 6 l/min at 3 bar flow pressure
- flow-stop mousseur
- ceramic disk headpart
- union nut 1/2"
- with 10.5 mm drilling
- **GROHE StarLight** chrome finish
- projection 113 mm



## 20 201 000 UNIVERSAL UNIVERSAL PILLAR TAP 1/2"



### SPARE PARTS

- 1: Handle (Order-nr. 48041000)
- 1.1: Mousseur (Order-nr. 13998000)
- 2: Headpart (Order-nr. 48042000)
- 3: Shank fastening assembly (Order-nr. 45004000)
- 4: Coupling nut 1/2" x 14.5 mm (Order-nr. 1290200M)
- 4.1: Fibre seal dia. Ø 18,5 x Ø 12 x 2 (Order-nr. 0138900M)
- 5: Coupling nut 1/2" (Order-nr. 1290100M)
- 5.1: Fibre seal dia. Ø 18,5 x Ø 12 x 2 (Order-nr. 0138900M)