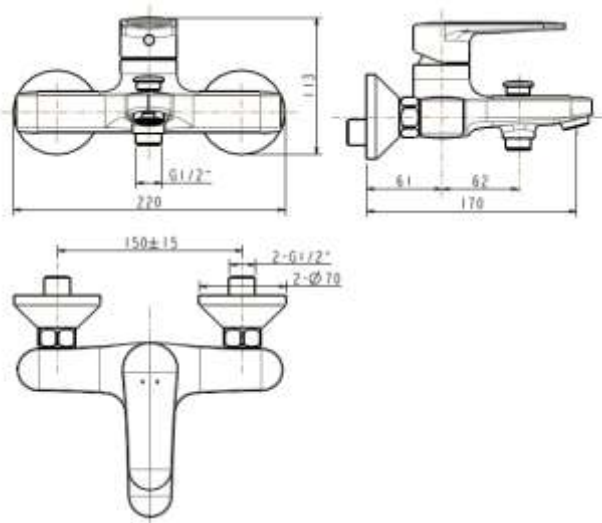


## CODIE

### Exposed Bath & Shower Mixer without Handshower



#### STANDARD SPECIFICATION

- Chromium plating for durable finish
- Ceramic disc cartridge
- Strong brass construction
- Wall-mounted installation
- Exposed Aerator
- Flow rate @ 0.1 MPa (with spout) 10.56 L/min
- Flow rate @ 0.1 MPa (without handshower) 12.30 L/min
- Spout reach : 111 mm

**PRODUCT WEIGHT:** 2.28 Kg

#### APPLICABLE CODES & STANDARDS:

- TIS 2067-2552
- GB 18145-2014